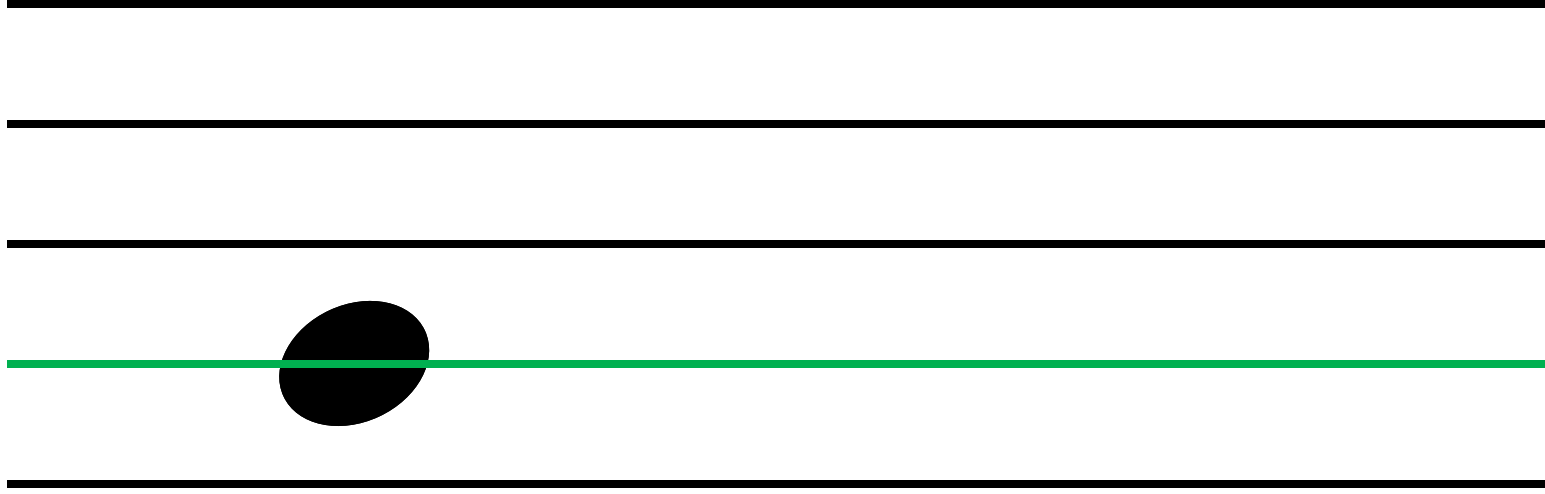
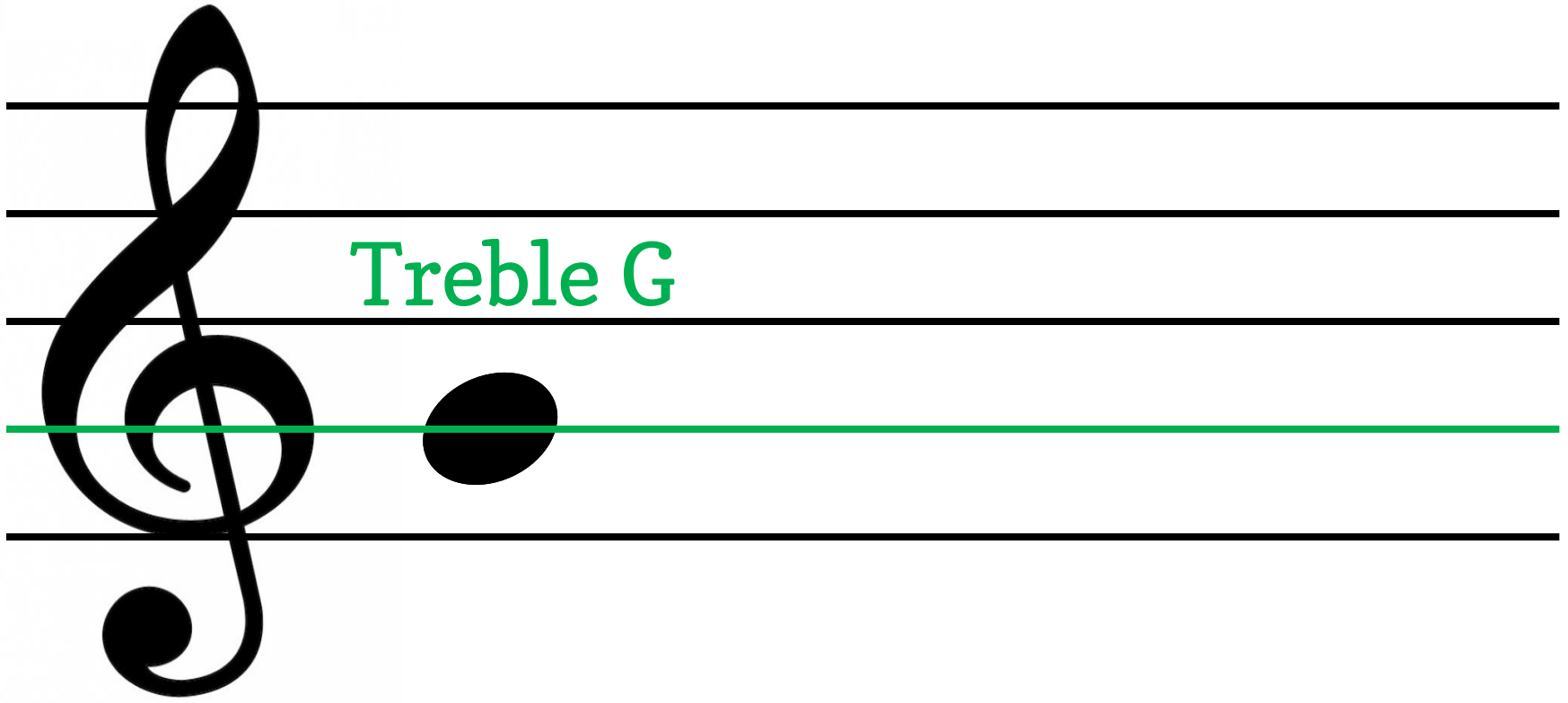


G





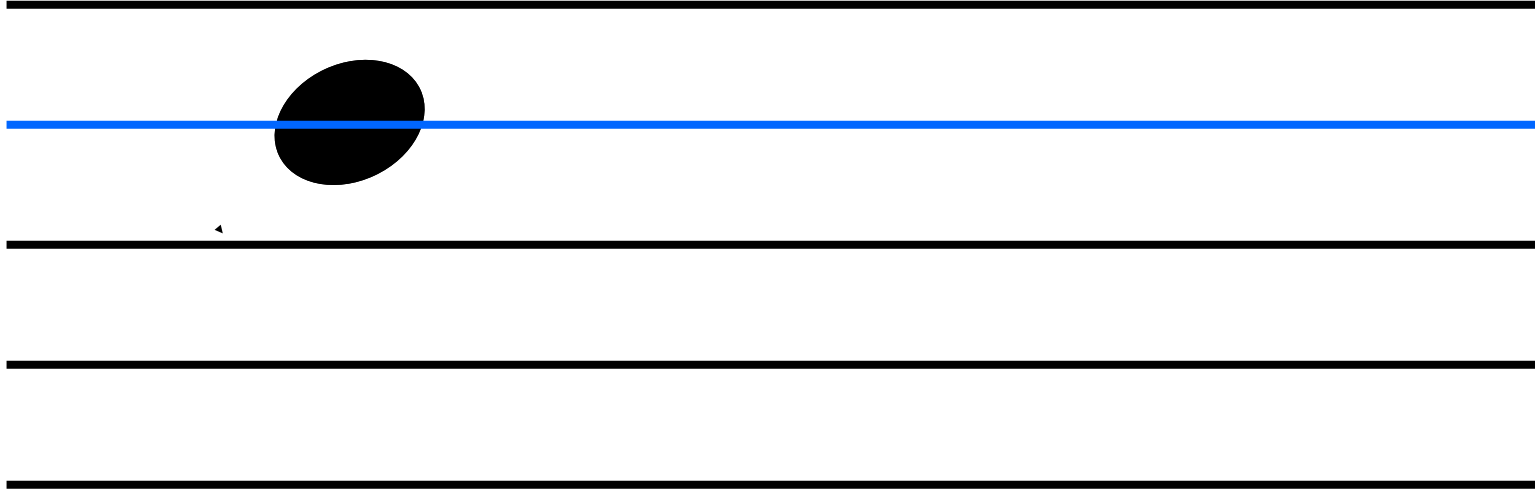
Treble G

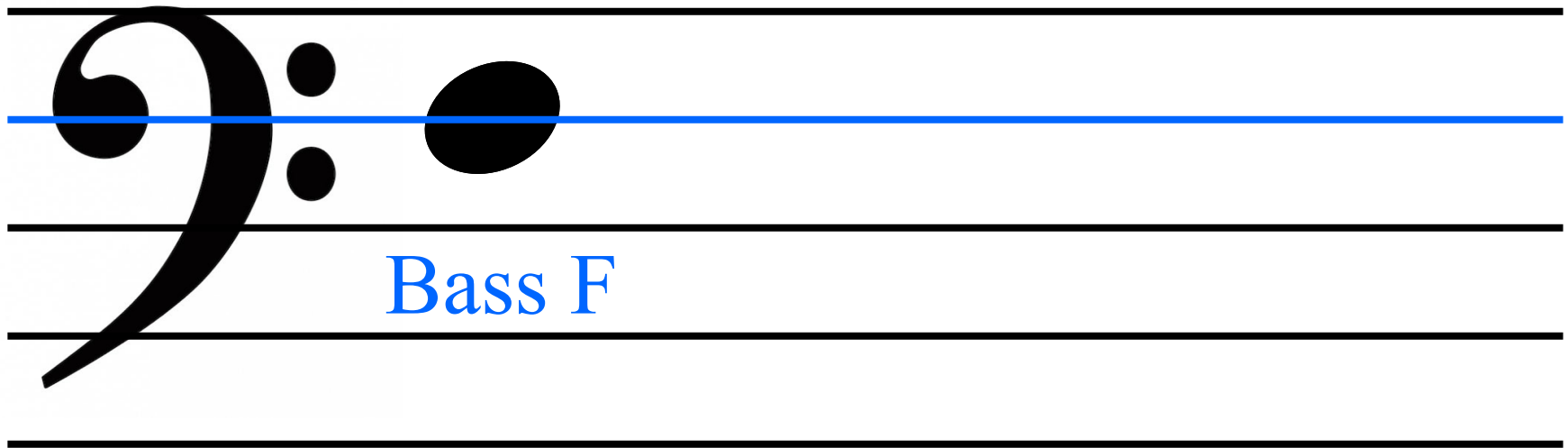
Treble G

Middle C

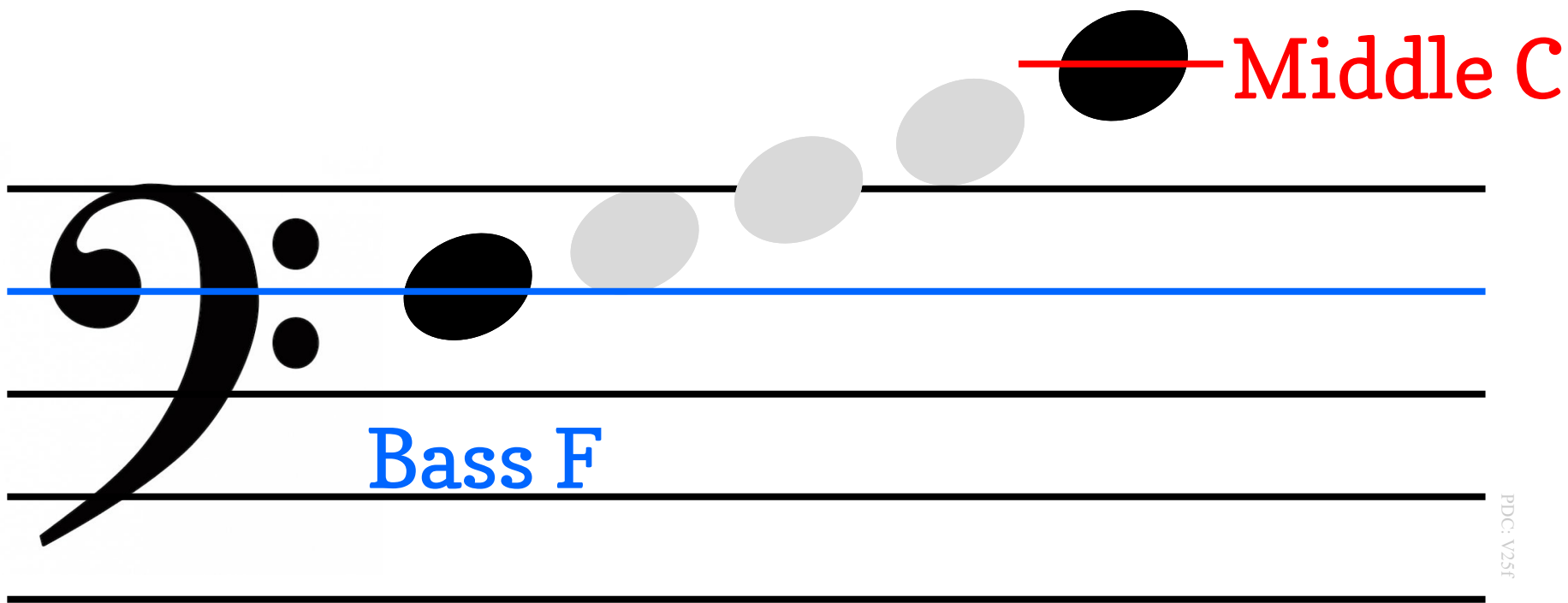
A musical staff with a treble clef. A green horizontal line is drawn across the staff, labeled "Treble G" in green text above it. A red horizontal line is drawn across the staff, labeled "Middle C" in red text to its right. A black note head is positioned on the green line. Three light gray note heads are positioned below the green line, and one black note head is positioned on the red line.

F





Bass F



Bass F

Middle C

A musical staff diagram consisting of five horizontal lines. On the left, a treble clef is positioned on the first line, and a bass clef is positioned on the fourth line. A large black brace on the far left groups the five lines. A green horizontal line is drawn across the staff, passing through the first space (between the first and second lines) and labeled "Treble G" in green text above it. A red horizontal line is drawn across the staff, passing through the first space of the second line (between the second and third lines) and labeled "Middle C" in red text to its right. A blue horizontal line is drawn across the staff, passing through the first space of the third line (between the third and fourth lines) and labeled "Bass F" in blue text below it. A series of seven circles are arranged in an ascending curve from left to right across the staff. The first circle is black and sits on the green line. The next two are light gray, with the first on the second line and the second on the third line. The next two are also light gray, with the first on the third line and the second on the red line. The final circle is black and sits on the red line.