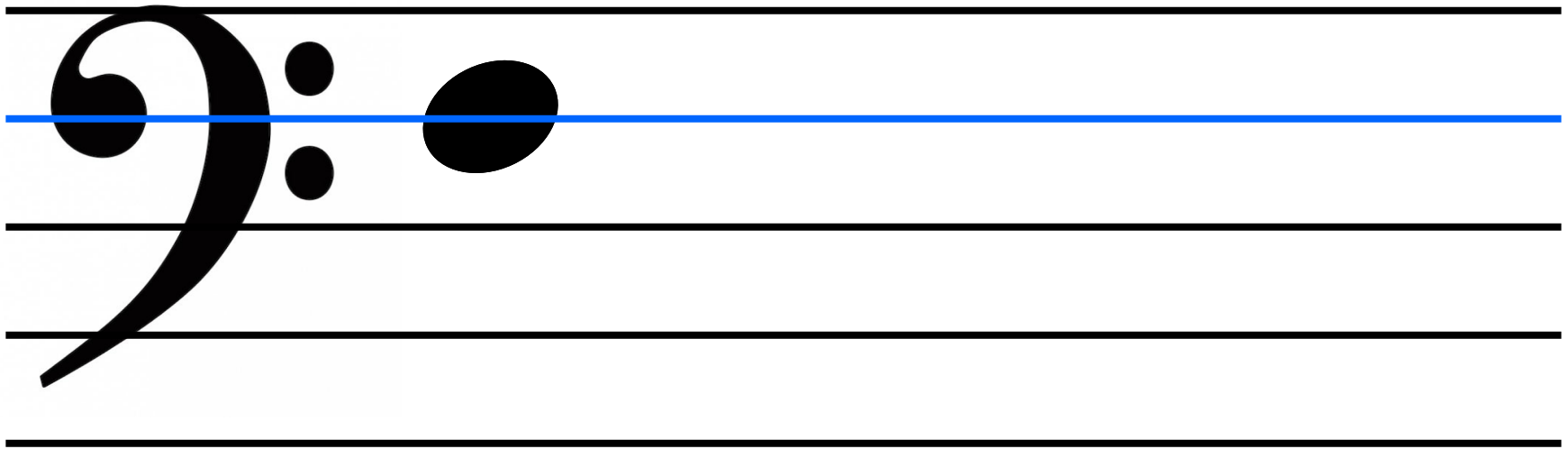


Treble G

# Bass F



A musical staff with five lines. On the left, a large black treble clef is positioned on the first line, and a large black bass clef is positioned on the fourth line. A large black dot representing the middle C note is placed on the second line of the treble clef staff, with a horizontal red line passing through its center. To the right of the note, the words "Middle C" are written in a large, red, sans-serif font. A large black bracket on the left side of the staff groups the treble and bass clefs together.

A diagram of a grand staff consisting of five horizontal lines. On the left, a large black brace groups the lines. The top two lines feature a treble clef, and the bottom three lines feature a bass clef. Three specific notes are highlighted: a black dot on the first line of the treble clef, a black dot on the first space between the second and third lines, and a black dot on the first line of the bass clef. Each note is accompanied by a horizontal line of the same color (green, red, and blue respectively) extending across the staff. To the right of each note is its name in the corresponding color: 'Treble G' in green, 'Middle C' in red, and 'Bass F' in blue.